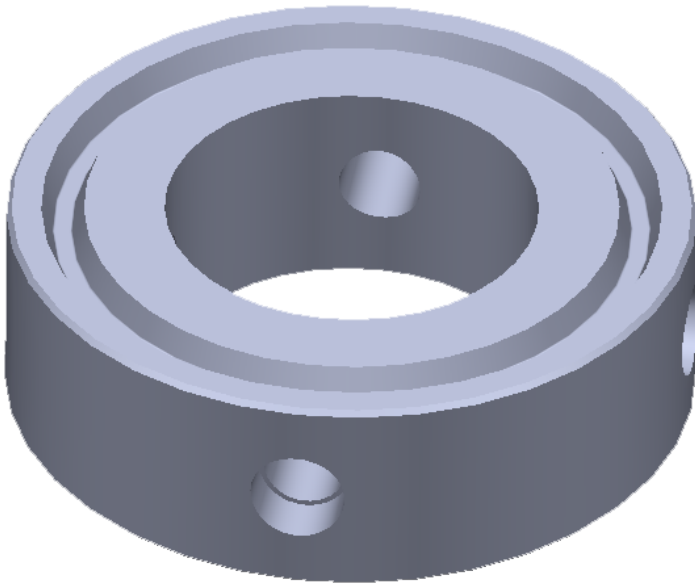


# Ring Joint Bleed Rings

Used for instrument installation, monitoring and system measuring purposes.



## SPECIFICATIONS

1/2" through 24" all pressure classes

Specifications: ASME B16.5

Standard overall length: 2.0" for Ring Joint

Other sizes available per customer request

Port Types: Threaded, Socket-weld and special

Also available with mounting bolt holes

**GIBSON  
PRODUCTS, INC.  
MANUFACTURES  
FROM A WIDE  
VARIETY OF  
MATERIALS**

- Carbon steel
- Stainless steel
- Chrome moly
- Nickel alloy
- Aluminum
- Copper nickel
- Titanium
- Zirconium
- Ferralium
- Materials used for Hydrofluoric Acid (HF) Alkylation Service
- Additional alloys per customer specification