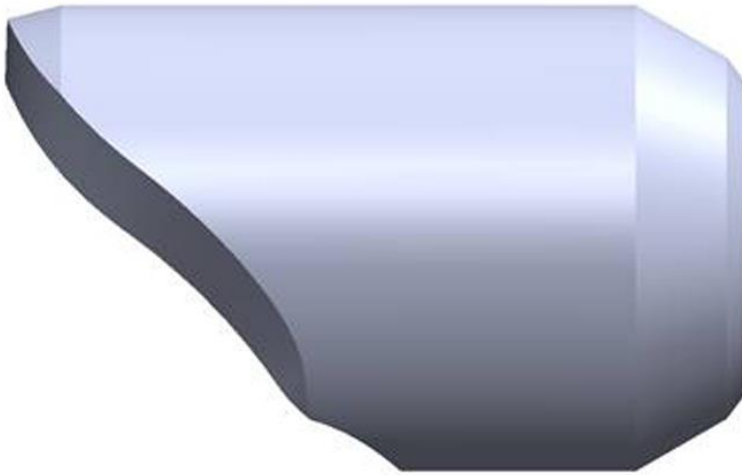


# Elbow Branch Connection

Branch Connections can be supplied in any applicable schedule or pressure rating and are available in all materials and in sizes ranging from 1/8" through 24", depending on run size and end connection type.



## SPECIFICATIONS

---

Butt-weld: 1/8" through 24" all schedules

---

Socket-weld: 1/4" through 4" Class 3000, 6000 & 9000

---

Threaded: 1/4" through 4" Class 3000, 6000 & 9000

---

Specifications: MSS-SP-97, ASME B16.11 and ASME B31.1

---

## GIBSON PRODUCTS, INC. MANUFACTURES FROM A WIDE VARIETY OF MATERIALS

- Carbon steel
- Stainless steel
- Chrome moly
- Nickel alloy
- Aluminum
- Copper nickel
- Titanium
- Zirconium
- Ferralium
- Materials used for Hydrofluoric Acid (HF) Alkylation Service
- Additional alloys per customer specification