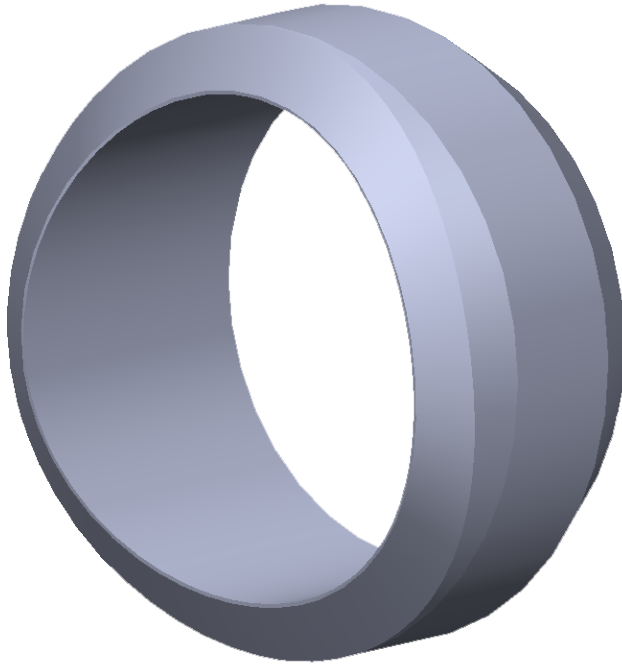


# Weld-on Branch Connection

Branch Connections can be supplied in any applicable schedule or pressure rating and are available in all materials and in sizes ranging from 1/8" through 24", depending on run size and connection type.



## SPECIFICATIONS

Butt-weld: 1/8" through 24" all schedules

Socket-weld: 1/8" through 6" Class 3000, 6000 & 9000

Threaded: 1/8" through 6" Class 3000, 6000 & 10,000

Specifications: MSS-SP-97, ASME B16.11 and ASME B31.1

**GIBSON  
PRODUCTS, INC.  
MANUFACTURES  
FROM A WIDE  
VARIETY OF  
MATERIALS**

- Carbon steel
- Stainless steel
- Chrome moly
- Nickel alloy
- Aluminum
- Copper nickel
- Titanium
- Zirconium
- Ferralium
- Materials used for Hydrofluoric Acid (HF) Alkylation Service
- Additional alloys per customer specification