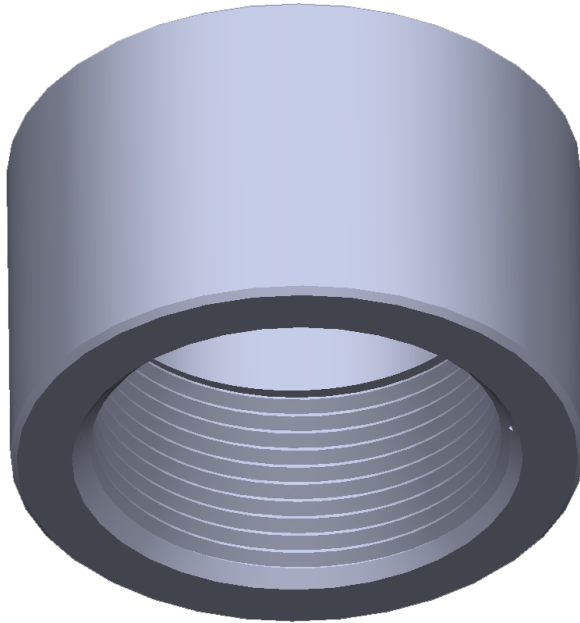


# Couplings Half

Threaded and Socket-weld Pressure Fittings are available in all types of materials for couplings.



## SPECIFICATIONS

Socket-weld: 1/8" through 8" Class 3000

Socket-weld: 1/8" through 4" Class 6000

Socket-weld: 1/2" through 2" Class 9000

Threaded: 1/8" through 8" Class 3000

Threaded: 1/8" through 4" Class 6000

Threaded: 1/4" through 3" Class 10,000

Specifications: ASME B16.11 except for Class 10,000

Other sizes and pressure classes available per customer specifications

**GIBSON  
PRODUCTS, INC.  
MANUFACTURES  
FROM A WIDE  
VARIETY OF  
MATERIALS**

- Carbon steel
- Stainless steel
- Chrome moly
- Nickel alloy
- Aluminum
- Copper nickel
- Titanium
- Zirconium
- Ferralium
- Materials used for Hydrofluoric Acid (HF) Alkylation Service
- Additional alloys per customer specification