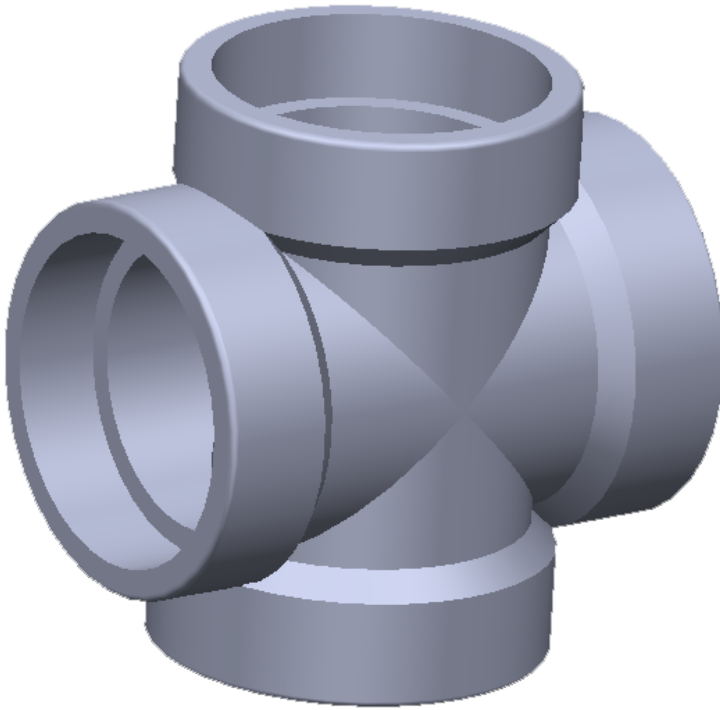


# Socket-weld Crosses

Socket-weld crosses are available in all types of materials.



## SPECIFICATIONS

Socket-weld  $\frac{1}{8}$ " through 4" Class 3000 & 6000 per ASME B16.11

Socket-weld  $\frac{1}{2}$ " through 2" Class 9000

Other sizes and pressure classes available per customer request

**GIBSON  
PRODUCTS, INC.  
MANUFACTURES  
FROM A WIDE  
VARIETY OF  
MATERIALS**

- Carbon steel
- Stainless steel
- Chrome moly
- Nickel alloy
- Aluminum
- Copper nickel
- Titanium
- Zirconium
- Ferralium
- Materials used for Hydrofluoric Acid (HF) Alkylation Service
- Additional alloys per customer specification