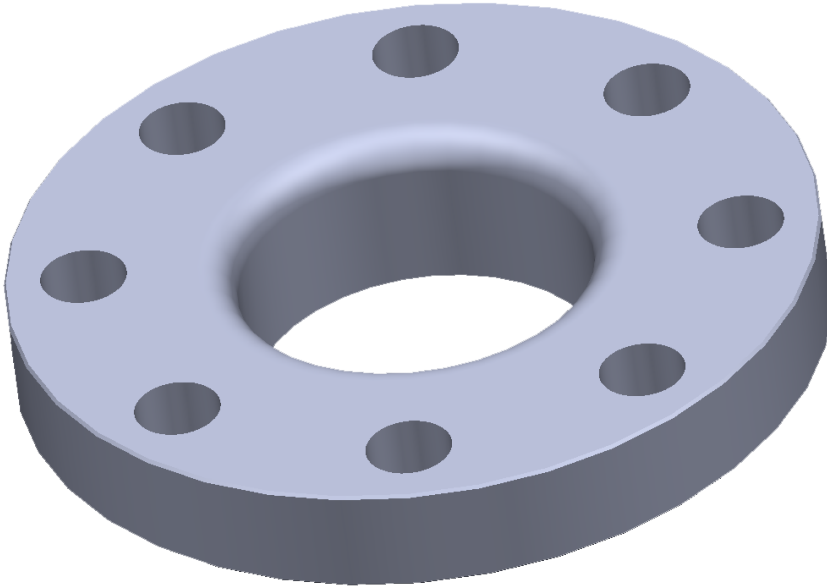


# Lapped Joint Flanges



## SPECIFICATIONS

1/2" through 24" Class 150, 300, 600, 900, 1500 per ASME B16.5

1/2" through 12" Class 2500 Per ASME B16.5

Specifications Available: ASME B16.5 - Pipe Flanges and Flanged Fittings

Reducing and Expanding sizes are also available

**GIBSON  
PRODUCTS, INC.  
MANUFACTURES  
FROM A WIDE  
VARIETY OF  
MATERIALS**

- Carbon steel
- Stainless steel
- Chrome moly
- Nickel alloy
- Aluminum
- Copper nickel
- Titanium
- Zirconium
- Ferralium
- Materials used for Hydrofluoric Acid (HF) Alkylation Service
- Additional alloys per customer specification