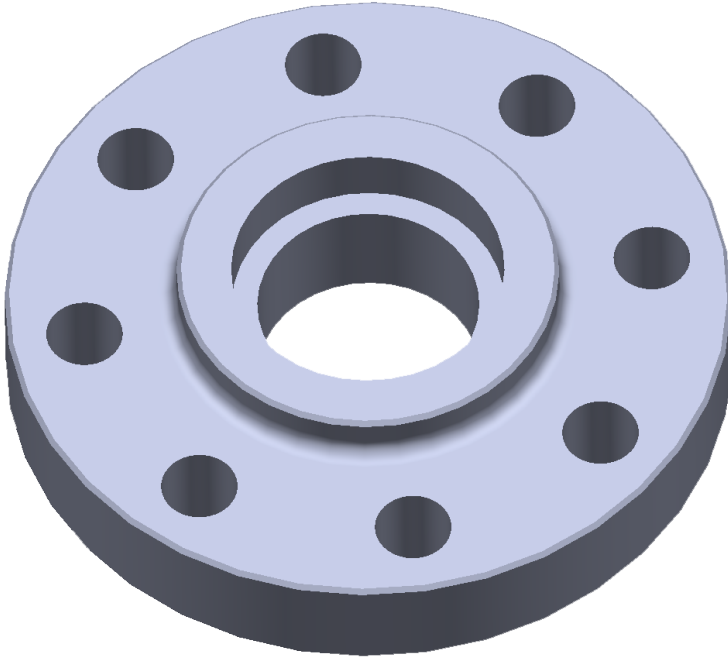


Socket-weld Flanges



SPECIFICATIONS

$\frac{1}{2}$ " through 24" Class 150, 300, 600, 900, 1500 per ASME B16.5**

$\frac{1}{2}$ " through 12" Class 2500 per ASME B16.5**

Facing Types: Raised Face, Flat Face, Ring Type Joint, Male, Female, Groove, Lens Joint, Lap Joint

Specifications Available: ASME B16.5 - Pipe Flanges and Flanged Fittings; ASME B16.36 - Orifice Flanges; ASME B16.47 - Large Diameter Steel Flanges; ASME B16.1 - Cast Iron Pipe Flanges and Flanged Fittings; JIS B2220 - Steel Pipe Flanges; MSS SP-44 - Steel Pipeline Flanges; and DIN EN 1092-1 - Steel Flanges - Part 1

**NOTE: ASME B16.5 only covers $\frac{1}{2}$ " through 3" for 150, and 600# class, and $\frac{1}{2}$ " through 2 $\frac{1}{2}$ " for 900 and 1500# class. Larger sizes can be manufactured, but will not be stamped as B16 flanges. The same applies to all 2500# class sizes

**GIBSON
PRODUCTS, INC.
MANUFACTURES
FROM A WIDE
VARIETY OF
MATERIALS**

- Carbon steel
- Stainless steel
- Chrome moly
- Nickel alloy
- Aluminum
- Copper nickel
- Titanium
- Zirconium
- Ferralium
- Materials used for Hydrofluoric Acid (HF) Alkylation Service
- Additional alloys per customer specification