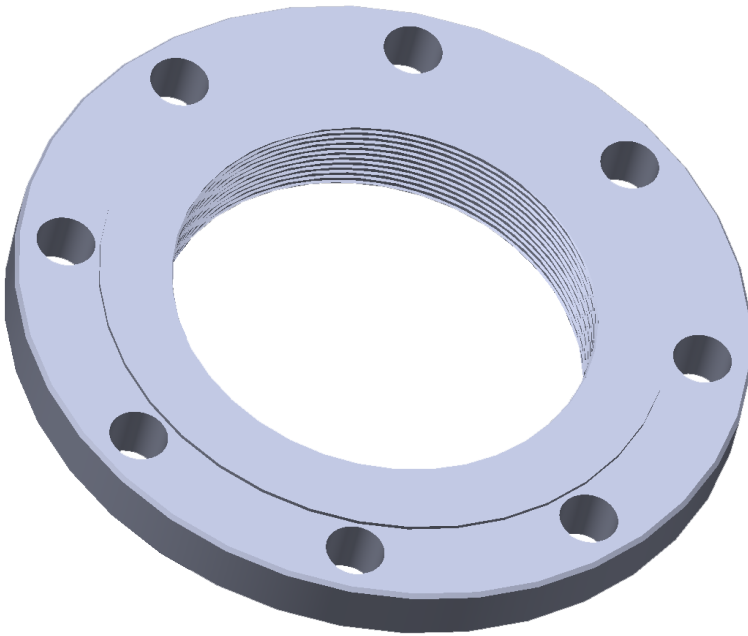


# Threaded Flanges



## SPECIFICATIONS

$1/2$ " through 24" Class 150, 300, 600, 900 per ASME B16.5\*\*

$1/2$ " through 12" Class 1500, and 2500 per ASME B16.5\*\*

Facing Types: Raised Face, Flat Face, Ring Type Joint, Male, Female, Groove, Lens Joint, Lap Joint

Specifications Available: ASME B16.5 - Pipe Flanges and Flanged Fittings; ASME B16.36 - Orifice Flanges; ASME B16.47 – Large Diameter Steel Flanges; ASME B16.1 – Cast Iron Pipe Flanges and Flanged Fittings; JIS B2220 – Steel Pipe Flanges; MSS SP-44 – Steel Pipeline Flanges; and DIN EN 1092-1 – Steel Flanges – Part 1

Also available in Orifice Flange configuration

\*\*NOTE: ASME B16.5 only applies through  $1/2$ " through  $2 1/2$ " for class 1500, and 2500#. Larger sizes can be manufactured, but will not be stamped as B16 flanges

**GIBSON  
PRODUCTS, INC.  
MANUFACTURES  
FROM A WIDE  
VARIETY OF  
MATERIALS**

- Carbon steel
- Stainless steel
- Chrome moly
- Nickel alloy
- Aluminum
- Copper nickel
- Titanium
- Zirconium
- Ferralium
- Materials used for Hydrofluoric Acid (HF) Alkylation Service
- Additional alloys per customer specification