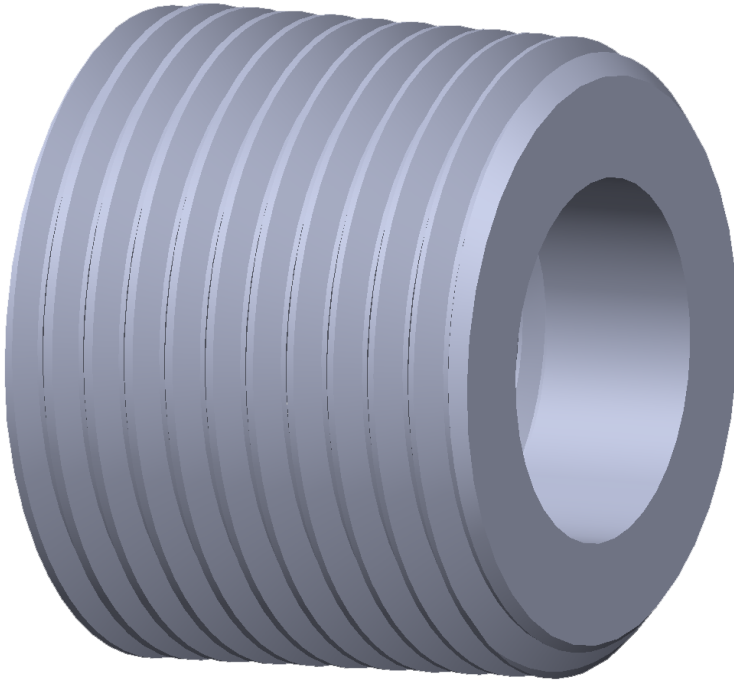


Flush Bushings

Threaded Bushings are available in all types of materials.



SPECIFICATIONS

External (male): Threads $\frac{1}{4}$ " through 8"

Internal (female): Threads $\frac{1}{8}$ " through 6"

Specifications: ASME B16.11 and ASME B16.14

Styles: Flush (Face)

Non-standard and special threads also available

**GIBSON
PRODUCTS, INC.
MANUFACTURES
FROM A WIDE
VARIETY OF
MATERIALS**

- Carbon steel
- Stainless steel
- Chrome moly
- Nickel alloy
- Aluminum
- Copper nickel
- Titanium
- Zirconium
- Ferralium
- Materials used for Hydrofluoric Acid (HF) Alkylation Service
- Additional alloys per customer specification