

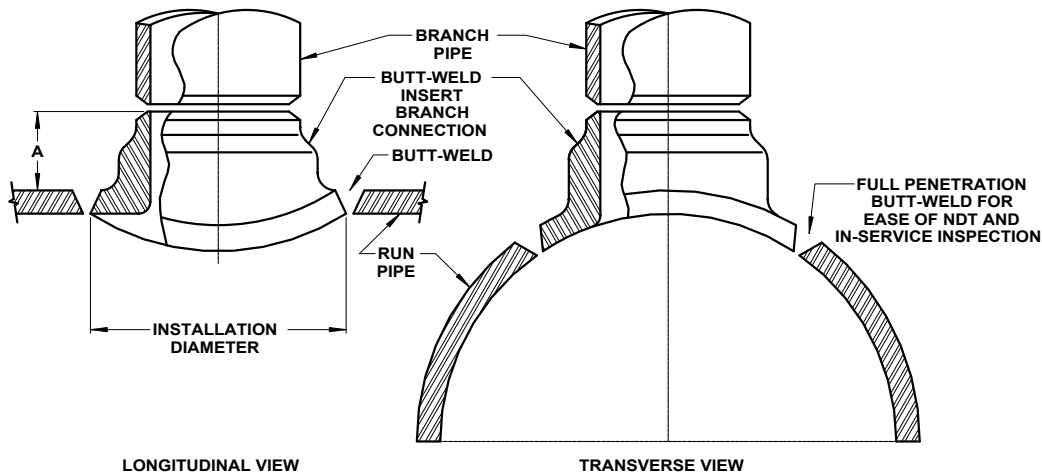
INSERT BRANCH CONNECTION

AN INTEGRALLY REINFORCED WELD-IN BRANCH CONNECTION

SPECIFY THE...

- INSERT BRANCH CONNECTION** FOR 100% X-RAY REQUIREMENT OF BRANCH WELDS
- INSERT BRANCH CONNECTION** FOR ULTRASONIC EXAMINATION OF BRANCH WELDS
- INSERT BRANCH CONNECTION** FOR SEVERE CYCLIC SERVICE

AVAILABLE in 1/2" through 24" NPS outlet sizes, designed specifically for critical service where a fully interpretable x-ray is required at the outlet-to-header weld. This integrally reinforced design satisfies ASME code requirements by restoring 100% of pipe strength. The Insert Branch Connection is ideal for cyclic conditions including pressure cycles and or thermal cycles. The Insert Branch Connection is designed and contoured to provide a flush fit with the run pipe O.D. and I.D. In most applications, the Insert Branch Connection is round, facilitating the use of automatic circle burning and welding equipment.



When Ordering The Insert Branch Connection Please Provide the Following Information:

- Header Size and Schedule or Thickness
- Outlet Size and Schedule or Thickness
- Material Specification and Grade
- Quantity

Insert Branch Connections are also available with Socket-Weld, Threaded, and Flanged outlet ends

If design code is not specified, the Insert Branch Connection will be designed in accordance with ASME B31.1. Section VIII needs design condition.

NOMINAL BRANCH SIZE	DIMENSIONS	
	A	INSTALLATION DIAMETER
1/2	1-5/16	INSTALLATION DIAMETERS VARY BY APPLICATION AND ARE AVAILABLE UPON REQUEST
3/4	1-5/16	
1	1-5/16	
1-1/4	1-5/16	
1-1/2	1-9/16	
2	1-5/8	
3	1-3/4	
4	2-1/8	
6	2-3/4	
8	3	
10	3-1/8	
12	3-5/16	
14	3-5/8	
16	3-3/4	
18	4-5/8	
20	5-1/8	
24	5-5/8	

NOTE: 'A' dimensions shown are nominal for STD & XS outlets. 'A' dimensions for other schedules will vary.