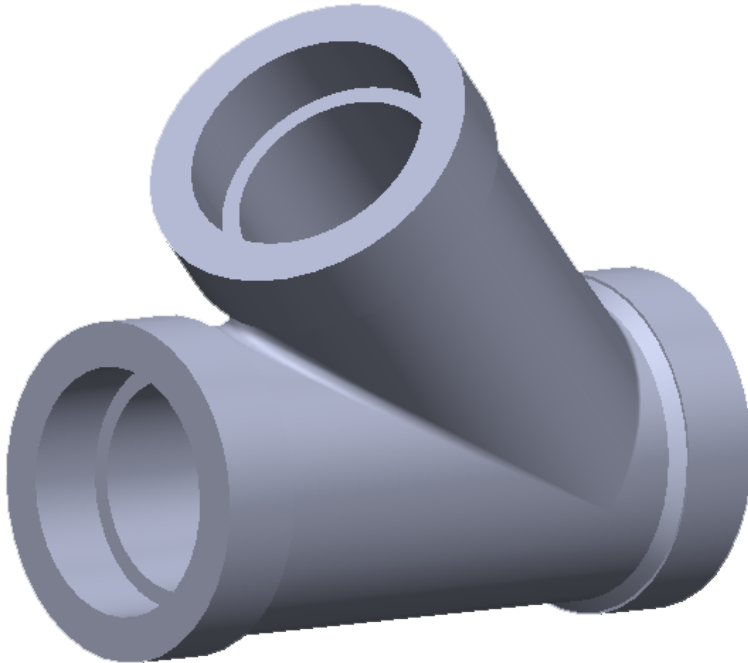


Socket-weld Laterals

Butt-weld, Socket-weld and Threaded laterals are available in all types of materials.



SPECIFICATIONS

$\frac{3}{8}$ " through 3" Class 3000

$\frac{1}{2}$ " through 2" Class 6000 & 9000

Specifications: Socket-weld ends per ASME B16.11

Also available in reducing configurations

**GIBSON
PRODUCTS, INC.
MANUFACTURES
FROM A WIDE
VARIETY OF
MATERIALS**

- Carbon steel
- Stainless steel
- Chrome moly
- Nickel alloy
- Aluminum
- Copper nickel
- Titanium
- Zirconium
- Ferralium
- Materials used for Hydrofluoric Acid (HF) Alkylation Service
- Additional alloys per customer specification