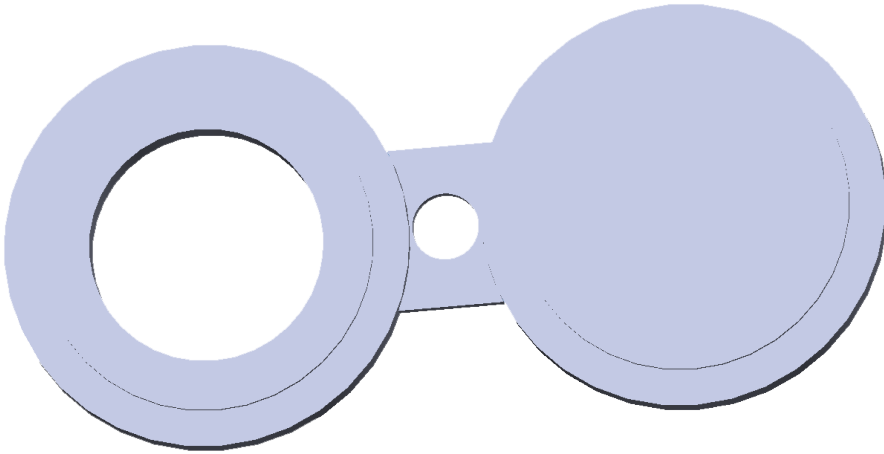


Spectacle Blank

Also called Figure-8 Blanks, a Spectacle Blank is a pressure-retaining plate with one solid end and one open end connected with a web or tie bar.



SPECIFICATIONS

Line Blank: RF and RTJ $\frac{1}{2}$ " through 24" Class 150, 300, 600, 900, 1500

Line Blank: RF and RTJ $\frac{1}{2}$ " through 12" Class 2500

Spectacle Blank: RF and RTJ $\frac{1}{2}$ " through 24" Class 150, 300, 600, 900, 1500

Spectacle Blank: RF and RTJ $\frac{1}{2}$ " through 12" Class 2500

Specifications: ASME B16.48

Special thicknesses and handle configurations are available per customer request

GIBSON PRODUCTS, INC. MANUFACTURES FROM A WIDE VARIETY OF MATERIALS

- Carbon steel
- Stainless steel
- Chrome moly
- Nickel alloy
- Aluminum
- Copper nickel
- Titanium
- Zirconium
- Ferralium
- Materials used for Hydrofluoric Acid (HF) Alkylation Service
- Additional alloys per customer specification