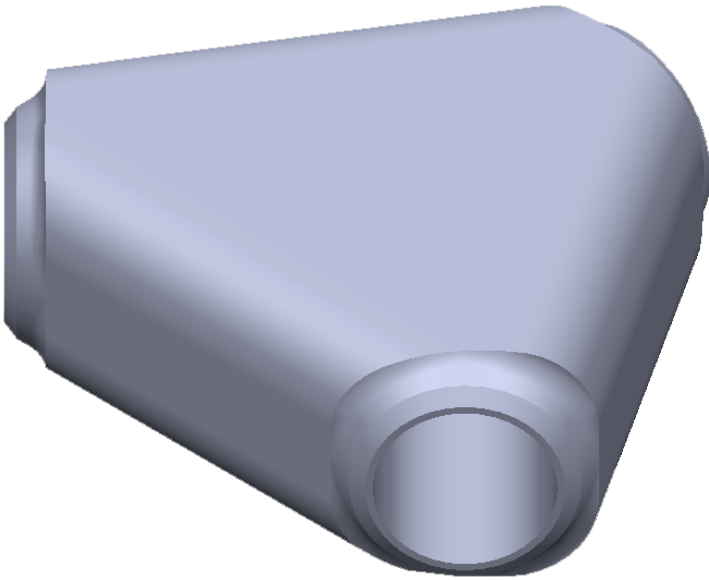


Wyes

Gibson Wyes are designed to perform well in the most demanding of applications, and are available in most grades of material.



SPECIFICATIONS

$\frac{1}{2}$ " through 6" all schedules

$\frac{3}{8}$ " through 2" Class 3000

$\frac{3}{4}$ " through 1 $\frac{1}{2}$ " Class 6000

$\frac{3}{8}$ " through 2" Class 3000

Specifications: Butt-weld ends per ASME B16.25

GIBSON PRODUCTS, INC. MANUFACTURES FROM A WIDE VARIETY OF MATERIALS

- Carbon steel
- Stainless steel
- Chrome moly
- Nickel alloy
- Aluminum
- Copper nickel
- Titanium
- Zirconium
- Ferralium
- Materials used for Hydrofluoric Acid (HF) Alkylation Service
- Additional alloys per customer specification